



MANATEC
ALIGNED TO EXCELLENCE

AUTOMOTIVE AFTER MARKET EQUIPMENT

For Cars & LCV Tyre Shop

Authorized Dealer for Manatec

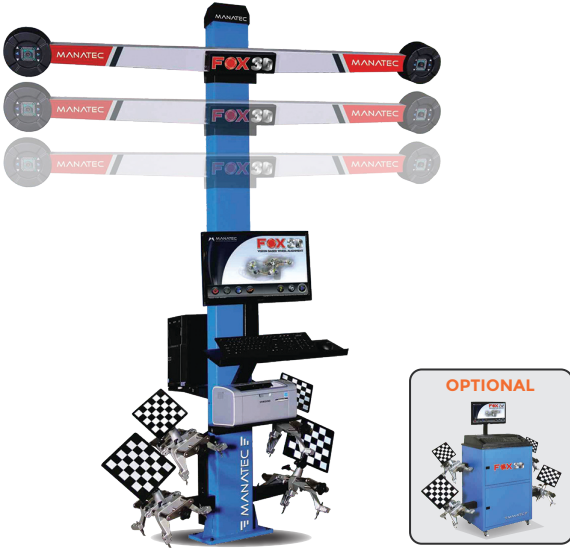


**KRISHNA
ENTERPRISES**

www.krishnaenterprises.com

MODEL

FOX 3D Auto BoomX



Automatic camera beam movement synchronized with movement of the vehicle on the lift by using compensation program. All measurements can be done at floor level and adjustments at any convenient height. Provision for manual height adjustment also available.

MODEL

FOX 3D VHX



Designed to perform alignment on Scissor lift, Four Post Lift and Pit. Horizontal beam with camera can be fixed at desired height.

MODEL

FOX 3D - DTX



Dual Tower model consists 2 vertical columns fitted with cameras. Ideal for space constraint workshops giving access for free movement in shop floor without any obstruction. No horizontal beam.

MODEL

FOX 3D - PTX



Designed to perform Alignment on pit.

MODEL **NEO 3D**



NEO 3D comes with compact camera pods fitted on the floor at a distance of 1125 mm from the centre of Rotary plates. This set up gives free space of 3375 x 902 mm (32.7 sq.ft)

Indigenous design that eliminates the horizontal beam in traditional 3D aligners and reduces minimum mandatory distance between cameras and targets.

With only 2 cameras it measures all alignment parameters in just 3 mins!

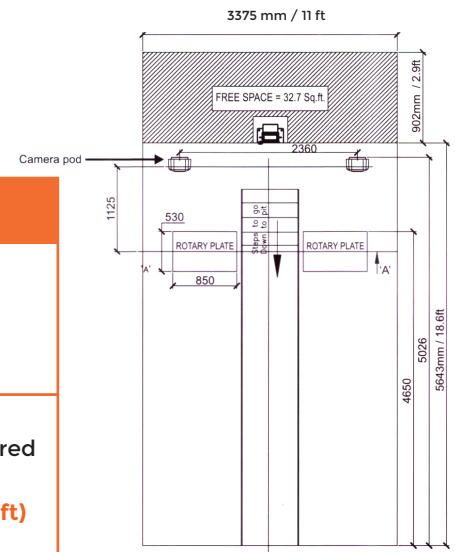
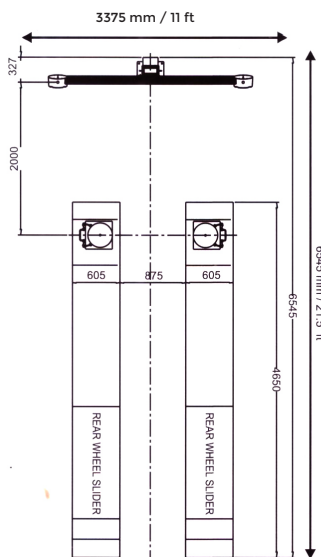
Conventional 3D



NEO 3D



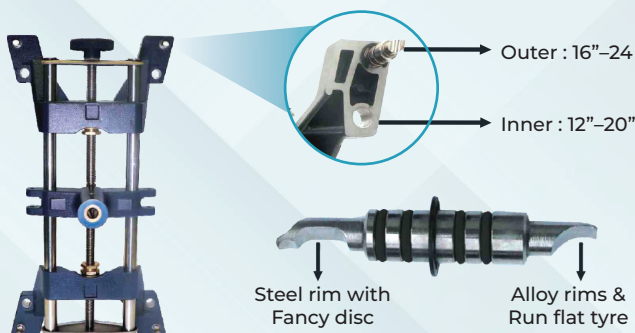
Space Saver



Conventional 3D	NEO 3D
Distance between cameras to front targets is 2m	Distance between cameras to front targets is 1.2m
Total by space required 3375 x 6545 mm (22 sq.mt / 237 sq.ft)	Total by space required 3375 x 5643 mm (19 sq.mt / 204.7 sq.ft)

Universal Wheel Bracket

Suitable for 12" – 24" rim diameter



SMART CONTROL - Optional

TABLET

Highly user-friendly Wi-Fi enabled tablet device to display alignment results and to operate the PC from the Alignment bay (Max 10 meters).



SALIENT FEATURES

- Vision based 3D Imaging technology using 2 High Performance
- SI (Scientific Image) Cameras
- Simultaneous Front and Rear wheel alignment (4x4)
- Push Pull Runout / Setback / Thrust angle compensation
- Lift level compensation at adjustment level
- Unlimited memory for vehicle specifications
- Option for selection of vehicle specification during alignment
- Power failure data protection
- Multi-lingual program & Voice prompt in English
- Automatic tracking of Left & Right turns for Caster/Kingpin measurements
- Adjustment of Camber in wheel Jacked-up position & Toe curve measurement
- Rear Setback & Track width difference
- Toe adjustment in single Tie rod vehicle, Vehicle geometry measurements
- Effortless Toe (Easy Toe) adjustment program / Drag link adjustment
- Camber measurement at Zero Toe
- Toe out on Turns & Lock angle measurements
- Animated pictorial display of angles during alignment
- Zoom in option for live parameters - like Camber, Caster & Toe
- Two color bar display for adjustment of all angles
- Option for Quick Wheel Alignment program
- Data Manager Software for storing & retrieving alignment results
- Customer Address in printout & customer data edit option
- Two wheel Alignment program by fixing only front two target plates

TECHNICAL SPECIFICATIONS

Measurement Parameters	Range	Accuracy
Camber (Front / Rear)	± 15° 00'	± 00° 02'
Caster	± 28° 00'	± 00° 05'
Kingpin Inclination	± 25° 00'	± 00° 05'
Toe (Front / Rear)	± 20° 00'	± 00° 02'
Total Toe	± 40° 00'	± 00° 04'
Toe Out on Turns	± 20° 00'	± 00° 02'
Setback (Front / Rear)	± 25° mm	± 2 mm
Thrust angle	± 05° 00'	± 00° 02'
Runout	± 10° 00'	± 00° 02'
Included angle	± 40° 00'	± 00° 05'
Track width difference	± 300 mm	± 5 mm
Power supply	230V AC, 50Hz / 110V AC, 60Hz	
Power consumption	200W (without Printer)	
Power consumption for Autoboom	400W (without Printer)	
Operating temperature	0° - 50°C	

STANDARD ACCESSORIES

	Target Plates - 4 Nos.		Brake Pedal Lock - 1 No.
	Wheel brackets (12" - 24") - 4 Nos.		Wheel stoppers - 2 Nos.
	Rotary Plates - (2 ton) - 2 Nos.		PC with LED Monitor, Keyboard & Mouse
	Steering Lock - 1 No.		Align+ & Data Manager Software

OPTIONAL ACCESSORIES

	Printer (Inkjet or Laser) - 1 No.		Wheel Bracket Adapters (10"-26") - 16 Nos.
	Long Rear wheel sliders - 2 Nos.		Rim locking pin - 16 Nos.

GRAPHICAL PRINTOUT

TEXT PRINTOUT

PRE-ALIGNMENT INSPECTION REPORT

WHEEL ALIGNMENT CENTRE
Mohan Nagar, Puducherry.

WHEEL ALIGNMENT RESULTS Job Number - 526

Date / Time : 06-Nov-22 10:15 am
Mechanic : Raj
Odometer : 15872
Make : Maruti Suzuki
Model : SX4

Regn. No. : PY-01-CD-1258
Owner : Manatec
Address : Industrial Estate
City : Puducherry
State : Puducherry
Phone : 0413 2248926

Parameter	Before Correction	After Correction
CAMBER	Left: -0°15', Right: +0°30'	Left: +0°15', Right: +0°15'
TOE	Left: +0°15', Right: +0°15'	Left: +0°15', Right: +0°15'
CASTER	Left: +0°15', Right: +0°15'	Left: +0°15', Right: +0°15'
THRUST ANGLE	Left: +0°15', Right: +0°15'	Left: +0°15', Right: +0°15'

MANATEC ELECTRONICS PVT. LTD.
Bahour Main Road, Karikalampakkam, Puducherry - 605 007, India.

Fox3D (SW : 3.16, S/N : 3D7777) Copyright © 2010, Manatec Electronics

WHEEL ALIGNMENT CENTRE
Mohan Nagar, Puducherry.

WHEEL ALIGNMENT RESULTS Job Number - 526

Date / Time : 06-Nov-22 10:15 am
Mechanic : Raj
Odometer : 15872
Make : Maruti Suzuki
Model : SX4

Regn. No. : PY-01-CD-1258
Owner : Manatec
Address : Industrial Estate
City : Puducherry
State : Puducherry
Phone : 0413 2248926

DB : India (2014-1)	Before correction	Specification			After correction
		Min	Target	Max	
CAMBER	Left	+0°15'	+0°02'	+0°02'	+0°10'
	Right	+0°30'	+0°02'	+0°10'	+0°05'
KINGPIN	Left	+12°15'	+12°15'	+12°15'	+12°45'
	Right	+11°00'	+12°15'	+13°15'	+13°00'
INCLUDED ANGLE	Left	+0°00'	---	+13°17'	---
	Right	+0°00'	---	+13°17'	---
CASTER	Left	+0°30'	+0°15'	+0°25'	+0°30'
	Right	+0°10'	+0°15'	+0°25'	+0°20'
SETBACK	Left	0mm	---	---	0mm
	Right	0mm	---	---	0mm
TOE	Left	+0°30'	+0°20'	+0°42'	+0°14'
	Right	+0°30'	+0°20'	+0°42'	+0°14'
TOTAL TOE	Left	+0°30'	+0°40'	+0°84'	+0°28'
	Right	+0°30'	+0°40'	+0°84'	+0°28'
REAR WHEEL ALIGNMENT RESULTS	Left	+0°00'	+0°30'	+0°30'	+0°20'
	Right	+0°00'	+0°30'	+0°30'	+0°20'
THRUST ANGLE	Left	-0°30'	+0°10'	+0°10'	+0°06'
	Right	-0°30'	+0°10'	+0°10'	+0°06'
TOTAL TOE	Left	+0°10'	-0°04'	+0°06'	+0°08'
	Right	+0°10'	-0°04'	+0°06'	+0°08'
SETBACK	0mm	---	---	0mm	

MANATEC ELECTRONICS PVT. LTD.
Bahour Main Road, Karikalampakkam, Puducherry - 605 007, India.

Fox3D (SW : 3.16, S/N : 3D7777) Copyright © 2010, Manatec Electronics

WHEEL ALIGNMENT CENTRE
Mohan Nagar, Puducherry.

WHEEL ALIGNMENT RESULTS Job Number - 526

Date / Time : 06-Nov-22 10:15 am
Mechanic : Raj
Odometer : 15872
Make : Maruti Suzuki
Model : SX4

Regn. No. : PY-01-CD-1258
Owner : Manatec
Address : Industrial Estate
City : Puducherry
State : Puducherry
Phone : 0413 2248926

Item	Comments	Pre - Alignment Inspection		
		Check	Service	Replace
Tire Pressure		Yes	No	No
Wheel Bearings		Yes	No	No
Wheel Damper		Yes	No	No
Steering Damper		No	Yes	No
Steering Gear/Coupler		No	Yes	No
Rack And Pinion		No	Yes	No
Ball Joints		No	Yes	No
Spring/Torsion Bar		No	Yes	No
Shock/Strut		No	No	Yes
Idler Arm		No	No	Yes
Stabilizer Arm		No	No	Yes
Control Link		No	Yes	Yes
Control Arm/Bushings		No	No	No
Strut Rod/Bushings		No	No	No
Tie Rod Ends		Yes	No	No
Tie Rod Adjusting Sleeve		Yes	No	No
Stabilizer Bushings		Yes	No	No
Spring Shackles Bushings		Yes	No	No
Wheels/Fasteners		No	Yes	No
Spring Shackles Bushings		No	Yes	No
Spring Shackles Bushings		No	No	Yes

MANATEC ELECTRONICS PVT. LTD.
Bahour Main Road, Karikalampakkam, Puducherry - 605 007, India.

Fox3D (SW : 3.16, S/N : 3D7777) Copyright © 2010, Manatec Electronics

Models:

VL-65 LX

**VL-65 LX
Premium**

**VL-65 LX
Premium+**



Videographic Display

- Suitable for Car and LCV wheels
- Two modes of measurement - Normal & Fine
- Seven modes of Alloy wheel functions
- Graphical user interface for live balancing
- Option for "grams" / "ounces" unit conversion
- Automatic distance input (Not available in DL-65 C)
- Rim parameter value entry through wheel rotation
- Over voltage & over load protection circuit
- Universal AC input socket
- Self calibration (when calibration error is displayed)
- Self checking on-line error display
- Adjustable unbalance threshold (weight cut off)
- Mid-centering device with Quick change lock nut to ensure fast mounting & removal of wheels
- Mechanical brake for weight addition and wheel mounting (Not available in DL-65 C)
- Automatically starts when wheel guard is closed
- High resolution (HDMI input) & LED Monitor / LED
- *Wheel seating cones for LCV are supplied as optional*

ADDITIONAL FEATURES FOR PREMIUM MODELS

- Automatic Rim diameter and Rim width input
- Split weight program (spokes program)
- Optimization program
- Automatic Rim type detection

ADDITIONAL FEATURES FOR PREMIUM+ MODELS

- Laser line indication to indicate weight fixing position (for Sticker weights)
- Torch light for illumination of the Inner plane during weight fixing



Elegant Digital display

Models:

**DL-65 DL-65
Premium Premium+**

Models:

DL-65 C DL-65 C+

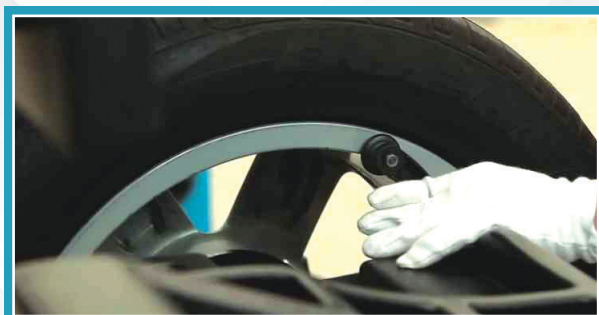


Laser line indication



Torch light indication

Automatic distance & diameter measurement



Automatic distance & rim diameter input through distance measuring rod.

Automatic width measurement



Automatic rim width measurement.

Models:

**TYREMATE
200 TL - RFT**



FULLY AUTOMATIC RUN FLAT TYRE

- Suitable for Car and LCV tyres
- Capable of handling stiff, wide and low-profile tyres using RFT helper arm
- Pneumatically operated tilting type vertical column
- Pneumatically operated twin cylinders for firm clamping
- Individual pedal for vertical column tilting
- Alloy wheel plastic protector for jaws

Models:

**TYREMATE
200 TL**



FULLY AUTOMATIC TUBELESS

- Suitable for Car and LCV tyres
- Pneumatically operated tilting type vertical column
- Pneumatically operated twin cylinders for firm clamping
- Individual pedal for vertical column tilting
- Four Jaw self centering chuck
- Alloy wheel plastic protector for jaw

Models:

TC - XL - 40



SEMI AUTOMATIC

- Suitable for Car and LCV tyres
- Pneumatically operated twin cylinders for firm clamping
- Four Jaw self centering chuck
- Horizontal moving arm
- Alloy wheel plastic protector for jaws

TECHNICAL SPECIFICATION

Technical Specification	Tyremate 200 TL - RFT Tyremate 200 TL	TC - XL - 40
Rim clamping from inside	12" - 24" (305 - 610 mm)	12" - 21" (305 - 533 mm)
Rim clamping from outside	10" - 21" (254 - 533 mm)	10" - 18" (254 - 457 mm)
Max. wheel diameter	38" (960 mm)	37" (930 mm)
Max. wheel width	3" - 12" (76 - 305 mm)	3" - 12" (76 - 305 mm)
Operating pressure	8 - 10 bar	6 - 8 bar
Bead breaker force	2500 kg	2500 kg
Power supply	220V AC, Single Phase, 50 Hz	220V AC, Single Phase, 50 Hz
Power	1.5 HP	1.0 HP

STANDARD ACCESSORIES



Inflation Gun



Tyre Lever



Jaw Cover



FRL Unit



Motorcycle
Adapter



Plastic
Mounting Head



Motorcycle
Mounting Head



Models: ME - NFS 308 A/MO-E

SALIENT FEATURES:

- Suitable for 2 Wheelers, Cars & LCVs
- Compact design with 50L NFS tank inside
- Provided with heavy caster wheels for portability
- Automatic Nitrogen generator shut-off after Nitrogen generation
- Two sets of large capacity CMS filter
- Automatic alarm for any error and work finish
- Record of last time set-data
- Audio and visual indication during nitrogen generation
- Accumulated working hours display for the filter replacement
- Large backlight LED for indicating pressure & time

TECHNICAL SPECIFICATION

Nitrogen Generated	PSA technology
Nitrogen Purity	95 - 99%
Air Inlet Pressure	8 -10 Kg/cm ² , 115 -145 PSI
Air Compressor Required	5.5-7.5 kW, 10 Kg/cm ² , Exhaust volume, 0.6-1.5 M /min
Nitrogen Outlet Pressure	1 - 6 Kg/cm ²
N ₂ Output Capacity	30 - 50 LPM 2.1 - 2.5 CFM
N ₂ Tank Capacity	50 ltrs. In-built
Measure Unit	Bar & PSI
Operating Temperature	0 - 50°C, 0 - 122°F
Power supply	220V AC, Single Phase, 50 Hz
Power	60 W

AIR COMPRESSOR

Models: ME - AC

RECIPROCATING TYPE AIR COOLED COMPRESSORS

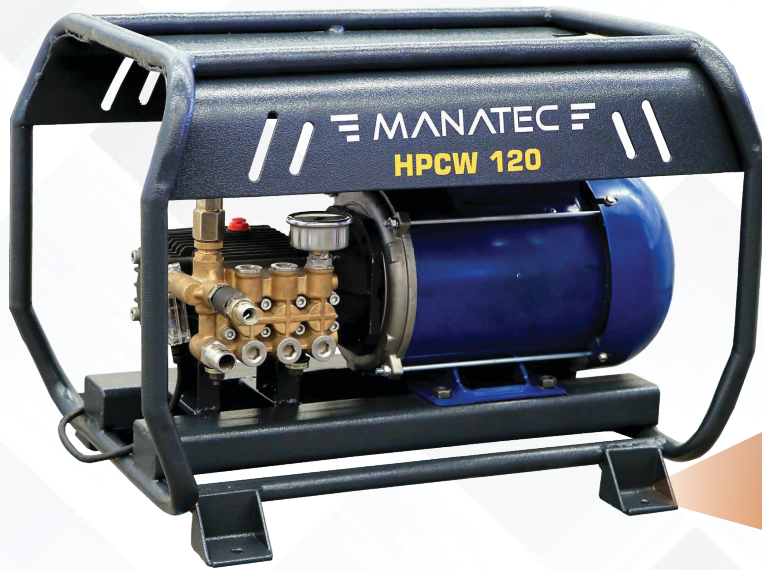
- Easy to Install
- Low Noise
- Cost efficient
- Built-in pressure switch & DOL starter
- Belt guard for safety
- Pressure release safety valves at different stages
- Two stage compression for better efficiency



TECHNICAL SPECIFICATION

Power (HP)	3	5	7.5	10	15	15
Compressor (RPM)	975	710	975	710	943	960
Tank Capacity (ltrs.)	975	250	250	420	500	500
Working Pressure (Kg/cm ²)	12	12	12	12	12	15
Free Air delivery (LPM)	263	390	536	781	1036	1022
No. of Cylinders	2	2	2	3	3	3
Power supply	415V AC, 3 Phase, 50Hz					

HPCW 120



Provision
for Wheel Fixing

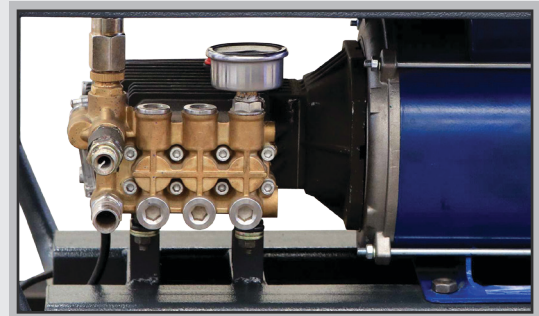
SALIENT FEATURES

- Triplex plunger pump - HAWAK Made in Italy
- VRT 3 unloader valve
- Starter with cable
- MV 925 QRC gun with 400mm Lance and V jet Nozzle SS
- Foam Gun with male coupler
- High Pressure heavy duty hose 3/8"-10m
- Suction hose -3m
- Pressure gauge
- Electric motor (Crompton / Rotomotive / BBL)

TECHNICAL SPECIFICATION

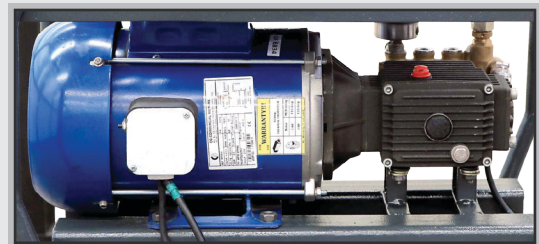
Type	Coupled
Plunger	3 No.
Speed(RPM)	1450
Crankcase oil capacity	1250 ml
Hose and Gun	1 No. each
2 Working pressure	120 Kg/cm ²
Output (LPM)	11
Hose length	10 mtrs.
Power supply	230V AC, Single phase, 50 Hz 380V AC, 3 Phase, 50 Hz
Power	3 HP

PLUNGER



Imported Italian Make

MOTOR



Crompton

ACCESSORIES



Foam Gun



High Speed Gun

Model: RHINO 4 HF 4 Ton Floor Plate

Model: RHINO 4 HC 4 Ton Clear Floor

Electro Hydraulic
SALIENT FEATURES:

- Lifting of Cars, MUVs & SUVs by Electro-Hydraulic power
- Suitable for Lifting / Lowering of Vehicles upto 4 ton weight
- Dual Hydraulic cylinder to ensure steady Lifting & Lowering
- Symmetric Vertical posts for wider opening of Vehicle door
- Universal Telescopic Asymmetric Lifting arms with 2 deck to accommodate different kinds of vehicles
- Limit switch for automatic stopping at extreme upper positions
- Safety mechanism using Steel rope to provide synchronous movement of both lifting arms

- Automatic Locking / Releasing device for Lifting arms while Raising
- Mechanical safety locking system to lock vehicle at different heights while lifting
- Rubber pad in vertical columns for safe door opening
- Power pack on front side of the post for easy operation and installation at lesser bay width

TECHNICAL SPECIFICATION:

Specification	Rhino 4 HF	Rhino 4 HC
Lifting capacity	4 Ton	4 Ton
Overall height	2800 mm	3660 mm
Bay width	3420 mm	3420 mm
Inside column	2755 mm	2800 mm
Load distribution (Front : Rear)	2 : 3	2 : 3
Lifting time	50 seconds	< 45 seconds
Drive through clearance	2576 mm	2576 mm
Maximum lifting height	1700 mm	1800 mm
Minimum height	100 mm	110 mm
<i>Lifting arm adjustments</i>	<i>Front</i> <i>Rear</i>	<i>Front</i> <i>Rear</i>
Minimum length	675 mm 735 mm	700 mm 830 mm
Maximum length	1000 mm 1120 mm	1060 mm 1330 mm
Power supply	380V AC, 3 Phase, 50 Hz	380V AC, 3 Phase, 50 Hz
Power	3.0 HP	3.0 HP

STANDARD ACCESSORIES


Height Adapters
 90mm length - 4 Nos.
 40mm length - 4 Nos.

Model: FSL E35 3.5 Ton



TECHNICAL SPECIFICATION:

Lifting capacity	3.5 Ton
Max lifting height	2030 mm
Min lifting height	330 mm
Platform length	1440 - 1740 mm
Platform width	550 mm
Lifting speed	<55 seconds
Dropping speed	<55 seconds
Input air pressure	6-8 Kg/cm ³
Power supply	380V AC, 3 Phase, 50 Hz
Power	2.2 KW

SALIENT FEATURES:

- Flush-Mount Scissors lift
- Easy for tyre and chassis maintenance
- Occupies smaller area
- Electro hydraulic operation
- Pneumatically controlled mechanical lock for safe operation
- Lifting power is higher due to double cylinder structure

WHEEL ALIGNMENT SCISSOR LIFT

Model: WASL D40 4.0 Ton

Electro Hydraulic



Double Scissor Lift

SALIENT FEATURES:

- Longer platform to perform Push Pull Runout
- Double-level platform scissor lift
- Double safety device : Hydraulic lock & Mechanical dual-gear safety-claw lock
- Oil-free nylon blocks for smooth scissor movement
- Pneumatic double-teeth self-locking system & anti-explosive PU hose
- Integrated base for easy '0' level adjustment for better accuracy of wheel alignment
- Limit switch for top safety height
- Safety Alarm during the final one feet down-movement
- Platform level sensor for monitoring uneven movement
- Ramps for on-ground Installations (*Optional*)

TECHNICAL SPECIFICATION:

Main machine Lifting capacity	4.0 Ton
Submachine Lifting capacity	2.0 Ton
Main machine max. Lifting height	1850 mm
Submachine Lifting height	450 mm
Main machine platform length	4500 mm
Submachine length	1400mm
Main machine platform width	620 mm
Overall length	5000 mm
Overall width	2040 mm
Lifting speed	<55 seconds
Dropping speed	<55 seconds
Power supply	380V AC, 3 Phase, 50 Hz
Power	2.2 KW

Model: PB 700 ECO, PB 700 ECO



SALIENT FEATURES:

- EPS (Expanded Polystyrene) sandwich panels, no Thermo transfers between inside and outside of the booth
- 8 ceiling light boxes (each with 3x16 Watts) LED bulbs
- Pre-filter class EU3 in Thermic group
- Fine filter in ceiling class Eu5
- Paint stop floor filter EU2 with filter frame
- Metal base (300 mm height)
- Two row K700 capacity galvanized grids floor
- Three rows of reinforced GI plates
- Standard Paint Booth includes the blower with damper unit and thermic unit
- Single turbo fan 5.5 kw (intake)
- Riello G10 Diesel oil burner
- Full function control panel with CE approved electric components

CONTROL BOX WITH :

- A) Thermostat 0-80°C
- B) Electric wiring cable
- C) Fan motor start / stop
- D) Burner start / stop
- E) Emergency stop
- F) Digital temperature setting
- G) Timer adjustment
- H) Operating hour counter

TECHNICAL SPECIFICATION:

Specification	ME-PB 700 Eco	ME-PB 700 Eco (WB)
Outside dimensions	7000 x 5350 x 3400 mm	7000 x 5350 x 3400 mm
Inside dimensions	6900 x 3900 x 2650 mm	6900 x 3900 x 2650 mm
Main door dimensions	3000 x 2600 mm	3000 x 2600 mm
Service door dimensions	650 x 1800 mm	650 x 1800 mm
Flow Rate	18000 m ³ /h	18000 m ³ /h
Air velocity	0.2 - 0.3 m/s	>=0.21 m/s
Working temperature	60 - 80 °C	80 °C
Fuel consumption	Depends on usage, filter & ambient condition	
Lighting intensity	650 - 700 Lux	<800 Lux
Sound level	<80 dBA	<80 dBA
Applicable vehicle	Passenger car	Passenger car
Power supply	380V AC, 3 Phase, 50 Hz	380V AC, 3 Phase, 50 Hz
Power	6.5 KW	8 KW

Model: : MIG / MAG 250 XL



SALIENT FEATURES:

- The inductor system ensures excellent welding characteristics on very thin materials
- Equipment can weld MS sheets
- Compatible with all welders
- Suitable for automobile and manufacturing sector
- High quality and robust design
- Automatic wire speed selection
- Time selection for spot welding
- High quality german made torch
- User-friendly control panel

TECHNICAL SPECIFICATION:

Fuse	1 amp for pcb
Open circuit voltage	15 - 35 V
Voltage positions	7
Duty cycle 100%	90 A
Duty cycle 60%	110 A
Duty cycle 30%	135 A
Current range	40 - 250 A
Wire reel weight	5 - 15 kg
Wire speed	2 - 15 m/min
Power supply	400V AC, 3 Phase, 50 Hz

PLASMA CUTTER

Model: : PC 40



TECHNICAL SPECIFICATION:

Rated input current	9.4 A (Max. 13 A)
No load voltage	230 V
Output current regulation	20 - 40 A
Duty cycle	60 %
Efficiency	85 %
Power factor	0.8
Protection class	IP23
Cutting thickness	1 - 10 mm
Power supply	230V AC±10%, Single Phase, 50-60 Hz
Power	4.9 kVA

SALIENT FEATURES:

- Inverter technology for compact design and better efficiency
- Adjustable Cutting current for different sheet thickness
- Able to cut Mild steel, Stainless steel, Aluminum, Copper etc.

Model: MIG / MAG 250 XL



Denting



Shrinking



Example for placing Claw Jaw Hammer in Long Washer

SALIENT FEATURES:

- Designed for metal panels
A truly amazing design
- Special tip for Shrinking
- High output transformer
- A whole package for all tinkering needs

TECHNICAL SPECIFICATION:

Number of modes	2 (Dent and Shrink)
Triggering	Automatic
Triggering	Input 230V AC - 50 Hz
Output	3500A I max
Output kVA nominal	11.5 kVA
Output voltage	7 V
Input cable	2.5 mm 3 core x 6 mtr
Output cable +	70 mm x 2 mtr
Output cable -	50 mm x 2 mtr
Protection	IP21

INVERTER SPOT WELDER

Model: ISW13KA



SALIENT FEATURES:

- The inverter technology that allows constant and high welding current not influenced by the variation of the supply voltages and by the secondary circuit conditions, the quality of the spot is improved also on galvanized sheets.
- The high current value allows to reduce welding time resulting in a longer electrodes life.
- The reduced absorption balanced on the three phases reduces the connecting and consumption costs. nAllow simultaneous connection of two tools with automatic recall of the relevant memorized welding program, enabling to save time, avoid errors so to have a simple and safe working process.

TECHNICAL SPECIFICATION:

Mains protection (delayed)	50 A - delayed
Clamping force	550 daN
Nominal Power 50% ED	25 kVA
Maximum welding power	190 kVA
Maximum secondary current	13000 A
Thermal current 100%	1.25 kA
No load secondary voltage	16 V
Weld time	0.01 ÷ 2s
Supply supply	400V AC, 3 phase, 50 Hz

STANDARD ACCESSORIES:

- Pair of water-cooled cables
- Adjustable height trolley with tray and arms holder
- Pair of water-cooled arms
- Water cooling electric group 2LP
- Compressed air filter-regulator
- Suspension arm
- Spring balancer

Models: I COOL 100, I COOL PRO 100 D, I COOL PRO 100



- LCD Monochrome display
- Suitable for Cars & LCV cabins
- Fully Automatic machine (Recovery, Recycling, Vacuum, Leak test & Recharging, Oil drain & integration)
- Option to perform above functions individually
- Dedicated gauge for Inlet pressure
- Filter in recovery line to eliminate humidity & acidity
- Manual air purge from refrigerant tank *(for i Cool 100 models)*
- Electronically controlled Automatic air purge system from refrigerant tank *(for i Cool Pro 100 models)*
- Tank pressure digital display *(for i Cool Pro 100 models)*
- Spark free Compressor and Vacuum pump *(for i Cool Pro 100 models)*
- Automatic Oil injection PAG oil with separate electronic scales
- Automatic High pressure protection for Compressor
- Audible indication / alarm
- Caution & error message / prompt
- Display of Pressure in "psi" / "bar" / "kPa" & Weight in "kg" / "lbs"
- Self diagnosis for checking the fitness of the machine
- Vehicle data base (up to 500 vehicles)
- Vehicle database with User entry provision
- Software update through USB interface
- Vehicle data update through USB interface

Recharge your Car Air Conditioning with Innovative & **Fully Automatic icool**

Additional features for i Cool Pro 100 D / i Cool Pro 100 models

- Automatic Oil injection POE oils with separate electronic scales
- Electric / Hybrid vehicles compatibility
- Hose purge system with separate flush input connectors

STANDARD ACCESSORIE



LCD Display



Printout

DATE	: 30/06/2019
TIME	: 12:47
Veh. MAKE	:
Veh. MODEL	:
RECOVERY SUMMARY	
R134a	: 0 g
RECHARGE SUMMARY	
R134a	: 442 g
O11	: 10 ml



HP Gauge



LP Gauge

TECHNICAL SPECIFICATION

Specification	i Cool 100 i Cool Pro 100 D	i Cool Pro 100
Type of refrigerant	R134a	R1234yf (or) R134a (Pre defined)
Service procedure	Automatic / Manual	
Display	LCD Monochrome 20x4	
Vacuum Pump	4.5 CFM, ½ hp, 128 Lit/Min. (for 230V AC) 5.0 CFM, ¾ hp, 141 Lit/Min. (for 110V AC)	
Compressor	9.1 cc (for 230V AC) 11.4 cc (for 110V AC)	12 cc (for 230V AC) 11.4 cc (for 110V AC)
Refrigerant bottle capacity	12 kgs	
Power Supply	110 / 230V AC, ±10%, 1ϕ, 60/50Hz, +N +PE	
Power consumption	900 W	

Models:
WOCT - 80



SALIENT FEATURES

- Self-contained wheeled unit
- Height adjustable swinging arm
- Airline connection to discharge unit
- Easy to use and position
- Minimise mess and spillages
- Avoid costly accidents
- Heavy Duty Castor Wheels for free movement of trolley within the workshop

TECHNICAL SPECIFICATION

Tank capacity	80 Ltrs
---------------	---------

VACUUM CLEANER

Models:
VC 70



STANDARD ACCESSORIES

- Suction hose
- Short connector
- Long connector
- Telescopic Pipe
- Floor Nozzle
- Crevice tool
- Dust brush
- Handle

TECHNICAL SPECIFICATION

Application	Wet & Dry
Motor	2 Nos.
Water lift	2300 mm H ₂ O
Air flow	270 m ³ /h
Tank capacity	70 Ltrs.
Motor power supply	1500 W (each)
Power supply	230V AC, Single phase, 50 Hz

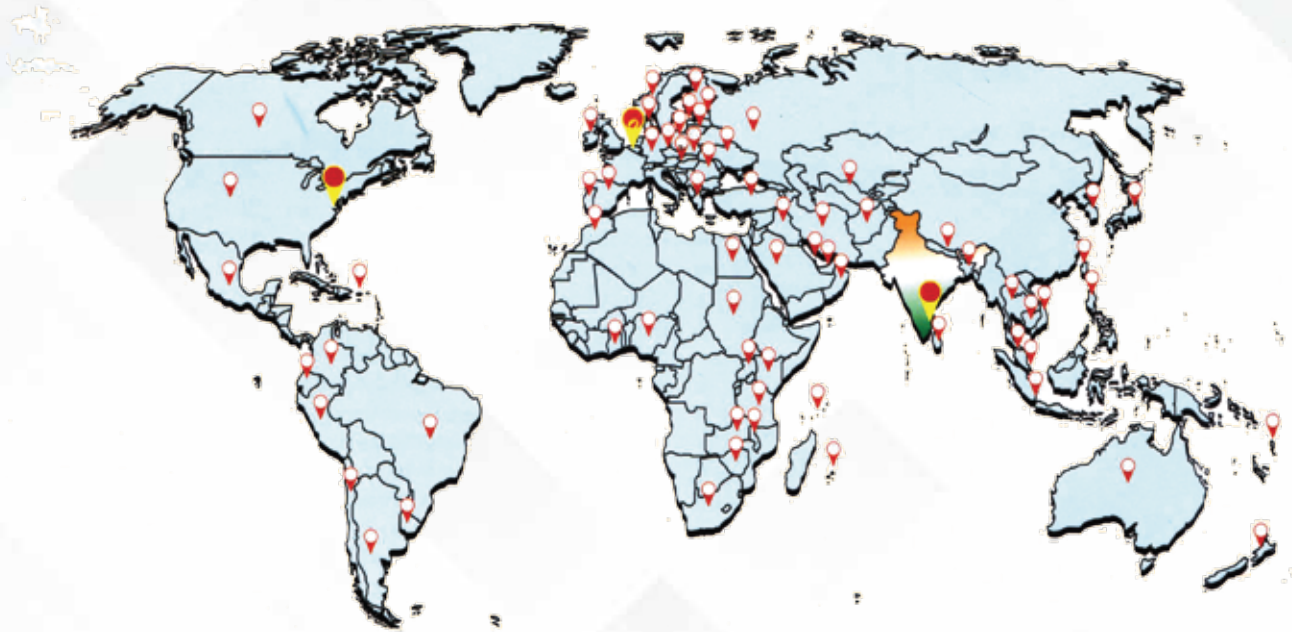
IMPACT WRENCH



SALIENT FEATURES

- ½" Impact Wrench to remove wheel nut in PCVs & SUVs
- Capacity bolt size - 19 mm
- Working torque : 525 Nm
- Free speed 7400 RP

GLOBAL PRESENCE



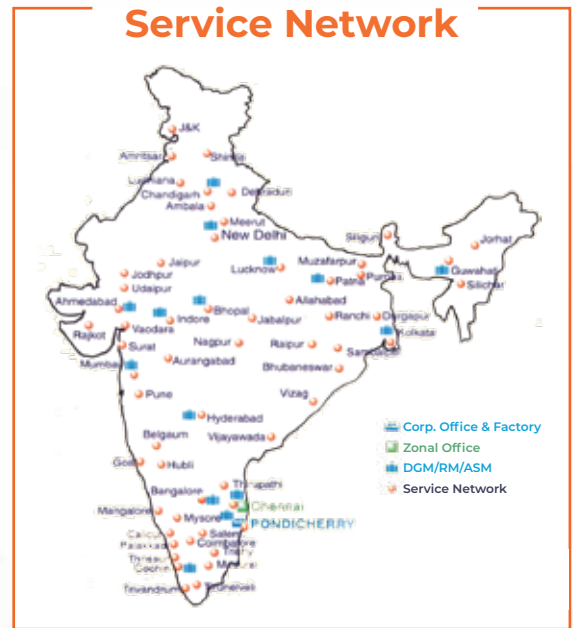
Accolades

- Innovation Award in Automechanika Germany - 2018
- Winner of MSME Award for Quality Products - for the year 2015
- Winner of CII Innovation Award - for the year 2015 - one of the Top 25 most innovative companies in India
- Winner of EEPC Award for 14 Consecutive years Since 2005
- TRiLA Company of year Award in 2015 & 17 - Best Tyre service equipment company for consecutive 3 years
- Winner of Kaizen Award for 8 consecutive years since 2013
- Products approved by all leading OEM & Tyre corporates

Asia's first designer of Wheel Aligner & Manufacturer of Garage Equipment



All India Seles & Service Network



C-22 & 23, Industrial Estate, Thattanchavady, Puducherry - 605 009. INDIA.

Ph : +91 413 3502000

Email : sales@manatec.in
exports@manatec.in



Distributor:



SR. NO. 48/6, Manaji Nagar, Near Tara Shrusti, Narhegaon, Pune - 411041. Maharashtra, INDIA.

Ph : +91-79 7236 2126 | +91-93 2226 0030

Email : servicekrishnaent@gmail.com
service@krishnaenterprises.com

web : www.krishnaenterprises.com

